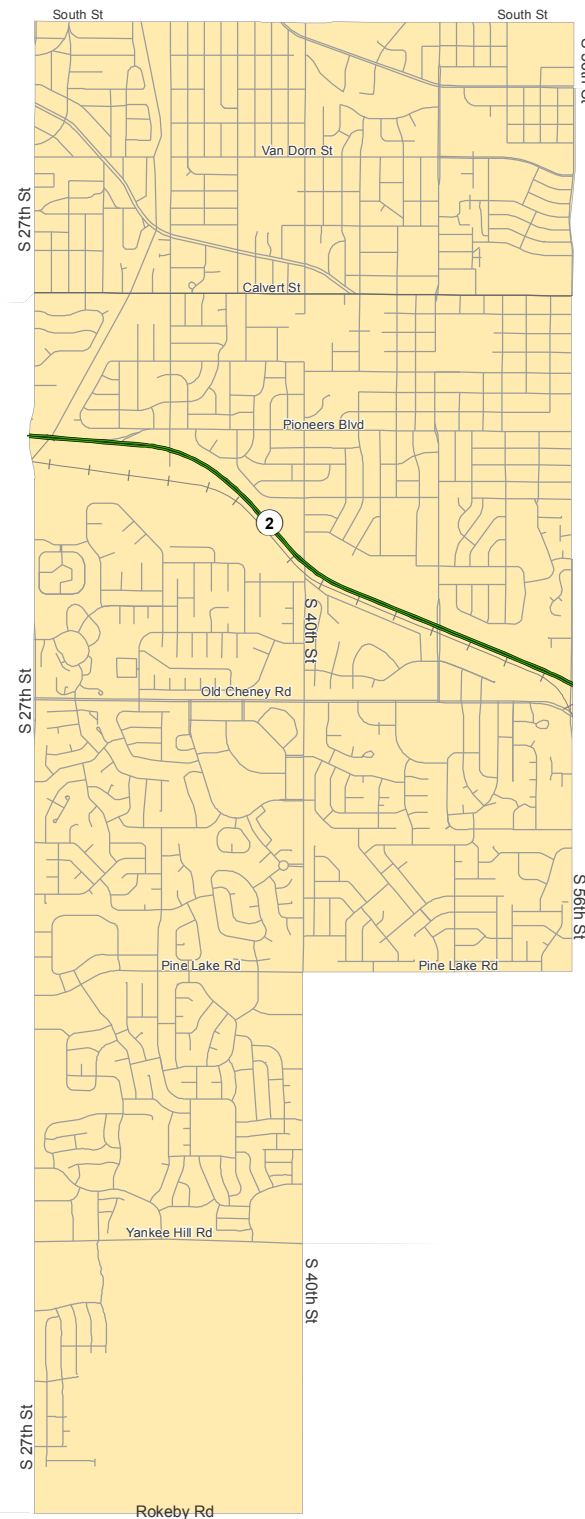
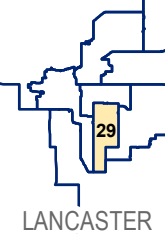


Legislative District 29 LB 703 - (2011)

LEG11-29



Index Map










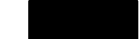
District 29 Statistics

	Total Population	Percent Population	Voting Age	Percent Voting Age
White	33,963	89.37%	26,385	91.41%
Black	757	1.99%	501	1.74%
Hispanic	1,397	3.68%	888	3.08%
Native Amer.	150	0.39%	100	0.35%
Asian	985	2.59%	692	2.40%
Total Minority	4,039	10.63%	2,481	8.59%
TOTAL	38,002	100.00%	28,866	100.00%

Population Deviation = +730

Percent Deviation = +1.96%

Symbology

-  Interstates
-  U.S. Highways
-  State Highways
-  Roads
-  Railroads
-  Legislative District
-  County Boundary
-  City or Village

Leg 2-43002-D (Committee Adoption, 5-5-2011)
U.S. Bureau of the Census (Population Data), 2010

GIS

Geographic Information Systems
Map Created by: Jack Dohrman and Trisha Schlake
Source: U.S. Census Bureau
Date Created: 5-12-2011

