

NEBRASKA



Good Life. Great Mission.

DEPT. OF HEALTH AND HUMAN SERVICES

Division of Medicaid & Long-Term Care

Nebraska Medicaid Expansion Report
December 2020

January 31, 2021

Prepared in Accordance with LB 294 (2019)

NEBRASKA

Good Life. Great Mission.

DEPT. OF HEALTH AND HUMAN SERVICES



Pete Ricketts, Governor

January 31, 2021

Clerk of the Legislature
Legislative Fiscal Office
P.O. Box 94604
Lincoln, NE 68509

Dear Clerk of the Legislature and Legislative Fiscal Office:

In accordance with LB 294 (2019) please find attached a report on Medicaid Expansion Administrative and Aid policy decisions for the calendar month of December 2020.

If you have any questions, please contact the Medicaid program at Jeremy.Brunssen@Nebraska.gov.

Sincerely,

Kevin Bagley, Director
Division of Medicaid and Long-Term Care
Department of Health and Human Services

Attachments: 2

Medicaid Expansion Programs 249 (Administration) & 349 (Aid)

The Department of Health and Human Services, Division of Medicaid and Long-Term Care (MLTC), provides the following update regarding Medicaid Expansion Administrative and Aid policy decisions for the calendar month of December 2020:

Expansion was launched successfully on October 1, 2020. With benefits through Medicaid expansion now available, many details of the program have been finalized and will not require additional updates in this report unless changes occur. Details on enrollment for the month of December are below:

Medicaid Expansion - Eligibility Determinations (as of 1/1/21)		
	December 2020	Cumulative
Basic ¹	6,336	20,948
Prime ²	259	7,785
Medically Frail	999	2,504
Pregnant Women	13	42
19-20 Year Olds	639	3,367
COVID PHE Prime ³	1,392	1,872
TOTAL:	6,596	28,731

In December, MLTC continued its planning for the implementation of the Heritage Health Adult (HHA) Demonstration Program on April 1, 2021. The state submitted a draft of the Demonstration Year 1 Implementation Plan to the Federal Government for feedback and review. Along with this, meetings have been held and work is progressing on developing the evaluation design and reporting requirements needed for the program.

¹ Basic benefits include physical health, behavioral health, and prescription drug coverage.

² Prime benefits include all Basic benefits, plus dental, vision, and over-the-counter medication coverage.

³ This category refers to people who would typically qualify for Basic benefits, but federal requirements around the COVID-19 Public Health Emergency (PHE) declaration require DHHS to place them in the Prime benefits tier.

DHHS Eligibility Operations completed a review of the currently used field documents as well as drafting new job aides and online training materials needed to prepare for the Demonstration Program.

Information Systems and Technology (IS&T) continued ongoing support for Medicaid expansion and planning for the HHA Demonstration program. Managed care plans have submitted contract amendments for review and continue to hire and train new staff and improve their work processes to ensure good customer service.

For the latest project schedule, please refer to the attached timeline.

For the latest program expenditures, please refer to the attached Expansion Aid tables.

Heritage Health Adult Phase II Implementation Plan Timeline
12/31/20

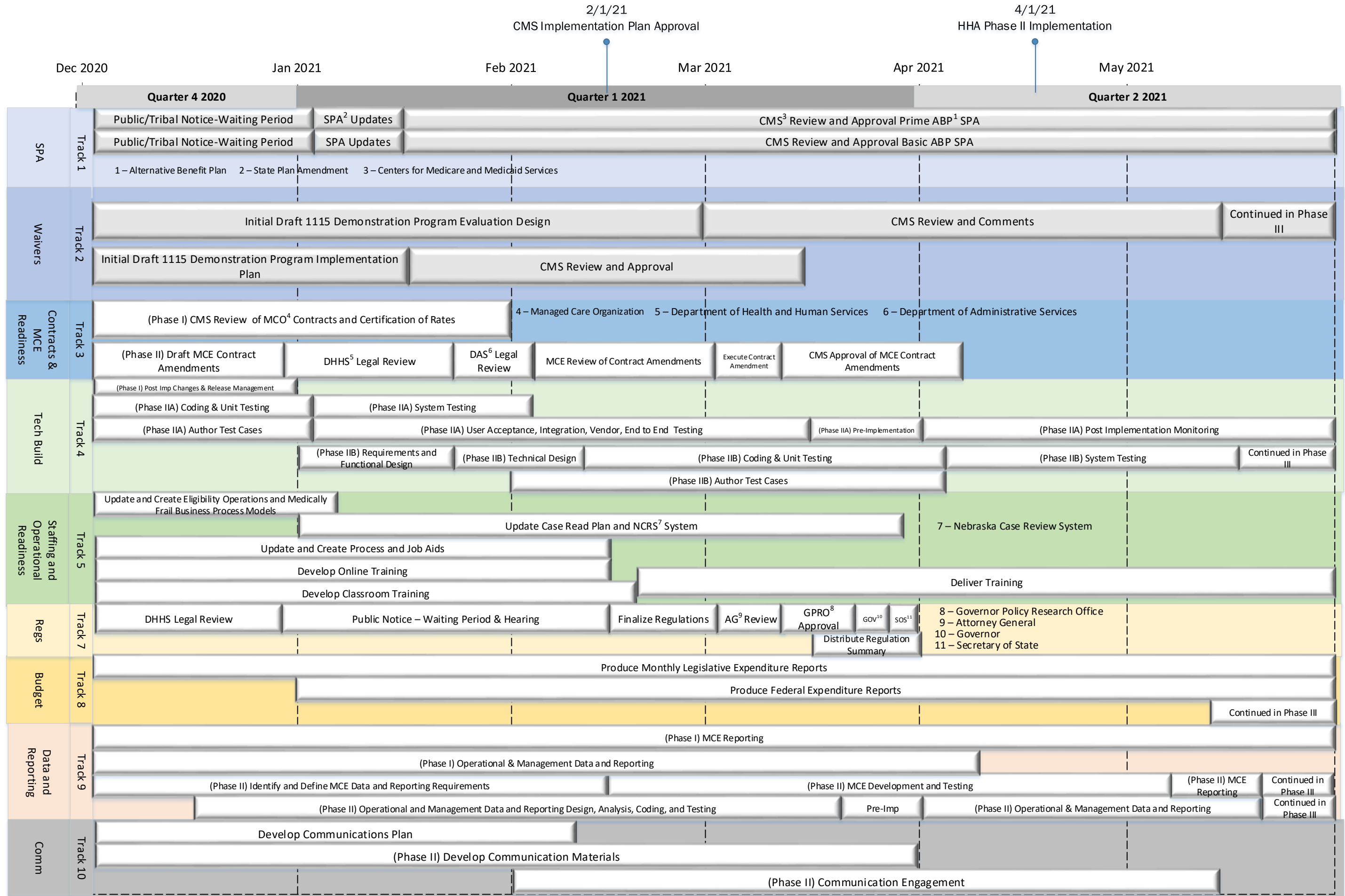


Figure 1: HHA Phase II Implementation Timeline

HHA Medicaid Expansion Program 349 Expenditures

December Expenditures:

Program 349 Expansion Aid SFY 20-21		
	Appropriations	Expenditures
GF	43,863,305	2,466,560
FF	373,260,870	19,670,683
Total	417,124,175	22,137,243

Total Expenditures since Implementation on October 1, 2020:

Program 349 Expansion Aid SFY 20-21		
	Appropriations	Oct-Dec Expend
GF	43,863,305	5,135,931
FF	373,260,870	40,514,634
Total	417,124,175	45,650,565