

# NEBRASKA



Good Life. Great Mission.

---

**DEPT. OF HEALTH AND HUMAN SERVICES**

Division of Medicaid & Long-Term Care

Nebraska Medicaid Expansion Report  
May 2021

June 30, 2021

Prepared in Accordance with LB294 (2019)

# NEBRASKA

Good Life. Great Mission.

DEPT. OF HEALTH AND HUMAN SERVICES



Pete Ricketts, Governor

June 30, 2021

Clerk of the Legislature  
Legislative Fiscal Office  
P.O. Box 94604  
Lincoln, NE 68509

Dear Clerk of the Legislature and Legislative Fiscal Office:

In accordance with LB294 (2019) please find attached a report on Medicaid Expansion Administrative and Aid policy decisions for the calendar month of May 2021.

If you have any questions, please contact me at [Kevin.Bagley@Nebraska.gov](mailto:Kevin.Bagley@Nebraska.gov).

Sincerely,

A handwritten signature in black ink, appearing to read "Kevin Bagley".

Kevin Bagley, Director  
Division of Medicaid and Long-Term Care  
Department of Health and Human Services

Attachments: 2

## Medicaid Expansion Programs 249 (Administration) & 349 (Aid)

The Department of Health and Human Services, Division of Medicaid and Long-Term Care (MLTC), provides the following update regarding Medicaid Expansion Administrative and Aid policy decisions for the calendar month of May 2021:

Expansion was launched successfully on October 1, 2020. Details on enrollment for the month of May are below:

<b>Medicaid Expansion - Eligibility Determinations (as of 6/1/21)</b>		
	<b>May 2021</b>	<b>Cumulative</b>
Basic <sup>1</sup>	1,701	32,859
Prime <sup>2</sup>	879	11,356
Medically Frail	520	5,631
Pregnant Women	31	201
19-20 Year Olds	328	5,524
<b>TOTAL:</b>	<b>2,581</b>	<b>44,215</b>

DHHS issued a press release on June 1, 2021, regarding changes to the program expected to be implemented on October 1, 2021. This change will provide the same level of benefits to all individuals enrolled in Heritage Health Adult. More details on this program change will be included in the next report sent to the Legislature.

For the latest program expenditures, please refer to the attached Expansion Aid table.

<b>Program 349 Expansion Aid SFY 20-21</b>		
	<b>Appropriations</b>	<b>Expenditures</b>
GF	\$43,863,305	\$22,453,512
FF est.	\$373,260,870	\$190,753,467
<b>Total</b>	<b>\$417,124,175</b>	<b>\$213,206,978</b>

The attached project timeline is reflective of the project's status as of May 31, 2021.

---

<sup>1</sup> Basic benefits include physical health, behavioral health, and prescription drug coverage.

<sup>2</sup> Prime benefits include all Basic benefits, plus dental, vision, and over-the-counter medication coverage.

Heritage Health Adult Phase 2 Implementation Plan Timeline  
2/28/21

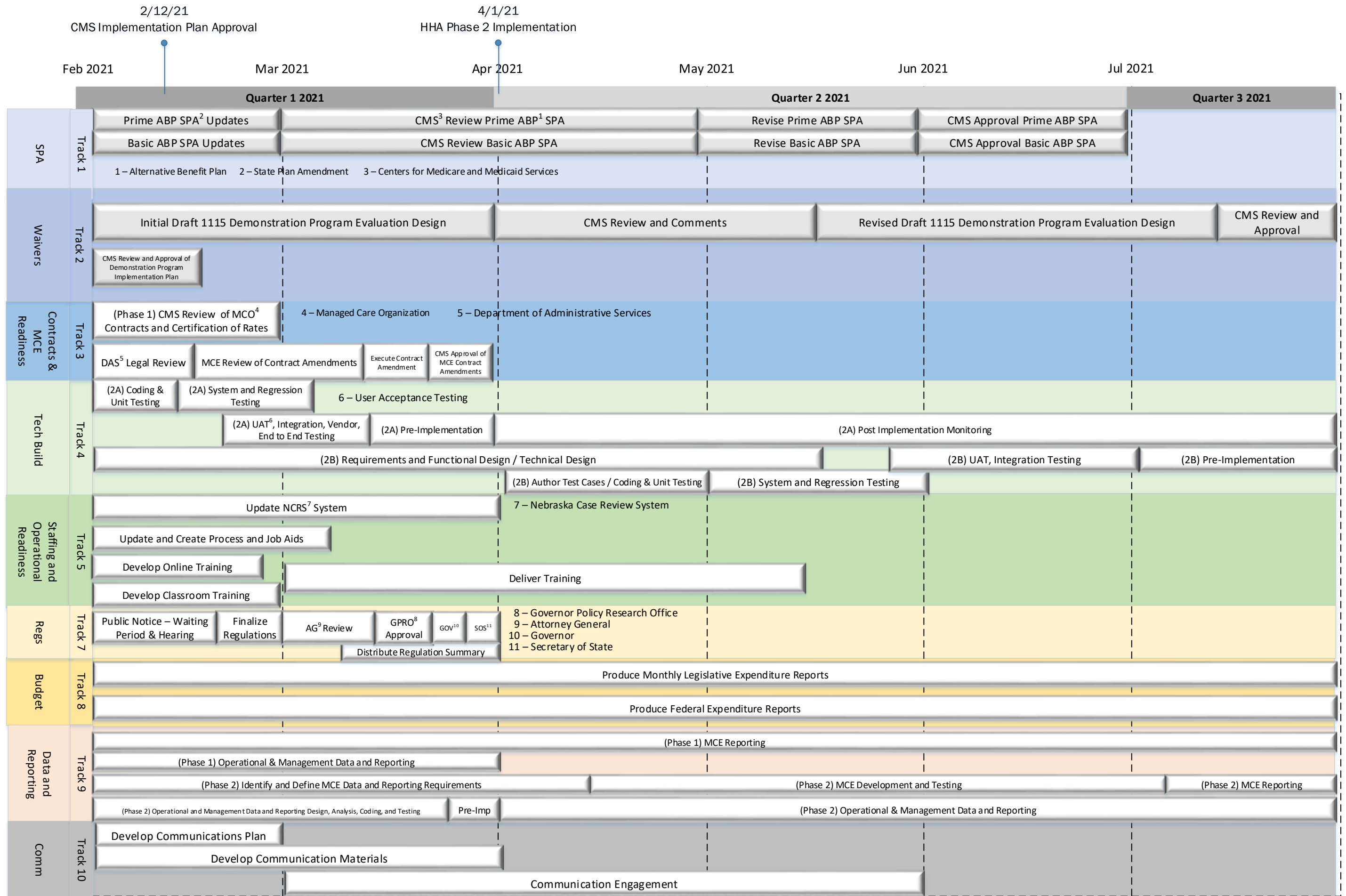


Figure 1: HHA Phase 2 Implementation Timeline